



St Peters Court, Broadstairs



29 St. Peters Court Broadstairs Kent CT10 2UU



Description

Ground Floor

- Porch
- L-Shaped Lounge/Diner 28'1 x 23'7 (8.56m x 7.19m)
- Kitchen 11'4 x 10'11 (3.45m x 3.33m)
- Utility Room
- Cloakroom

- Bedroom 13'2 x 10'0 (4.01m x 3.05m)
- Bedroom 11'11 x 8'0 (3.63m x 2.44m) plus built-in wardrobe
- Bedroom 10'2 x 10'0 (3.10m x 3.05m)
- Bathroom

First Floor

- Landing
- Bedroom 13'2 x 12'10 (4.01m x 3.91m)
- En-suite Shower Room

External

- Front Garden
- Driveway
- Double Garage 16'6 x 15'10 (5.03m x 4.83m)
- Rear Garden

Property

A spacious four bedroom detached house located in a peaceful cul-de-sac location. Accommodation consists of entrance through a large porch, spacious and well-proportioned living on the ground floor with large L-Shaped lounge/diner with doors out onto the secluded rear garden, separate kitchen with integrated appliances, utility room and downstairs cloakroom. On the first floor accommodation benefits from four great sized double bedrooms, master bedroom with built-in wardrobes and shower suite plus there is a family bathroom accessed via the landing.

Externally this perfect family home sits behind a lawned front garden, boasts off street parking for several cars leading to a double garage with electric doors and a private, tranquil rear garden which is mainly laid to lawn with shrub and flower beds, a spacious patio and a new garden shed.



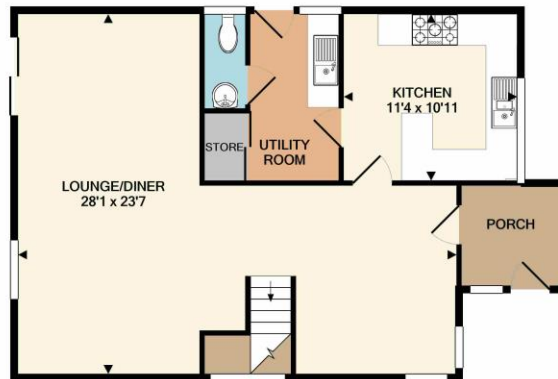
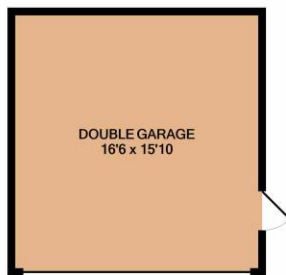
Location

The sought-after seaside town of Broadstairs, with its quaint fisherman's cottages and period houses, including Bleak House, once the summer home of Charles Dickens. Broadstairs is also well known for its Blue Flag award winning sandy beaches, including Viking Bay and Joss Bay. The town also offers a good range of facilities with a wonderful selection of boutique shops, restaurants and cinema, together with those found at Westwood Cross shopping centre.

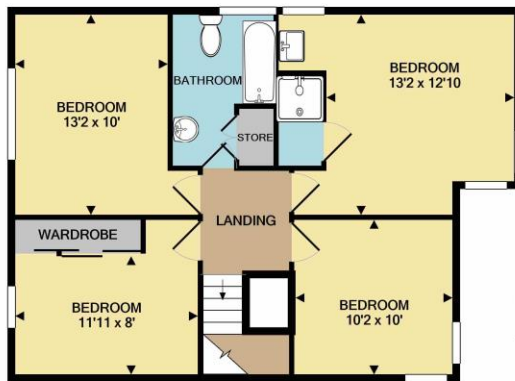
Sporting and recreational opportunities in the area include; a leisure centre at Ramsgate, golf at North Foreland Golf Club, the championship golf courses of Royal St Georges and Princes in Sandwich, various sports clubs in the area including Broadstairs Sailing Club, cliff top & beach walking, horse riding and bowls clubs.

Broadstairs benefits from the High Speed Rail with direct services to London (St Pancras 76 mins). The nearby A299 Thanet Way provides good access to the motorway network. The Eurotunnel at Cheriton, Port of Dover and Eurostar at Ashford are also easily accessed by car and provide excellent links to the continent.





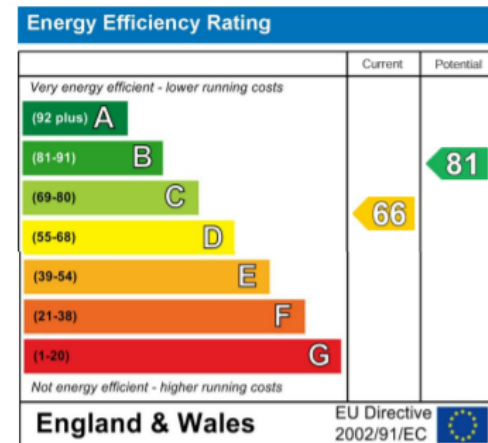
GROUND FLOOR
APPROX. FLOOR
AREA 1001 SQ.FT.
(93.0 SQ.M.)



1ST FLOOR
APPROX. FLOOR
AREA 686 SQ.FT.
(63.7 SQ.M.)

TOTAL APPROX. FLOOR AREA 1687 SQ.FT. (156.7 SQ.M.)

Whilst every attempt has been made to ensure the accuracy of the floor plan contained here, measurements of doors, windows, rooms and any other items are approximate and no responsibility is taken for any error, omission, or mis-statement. This plan is for illustrative purposes only and should be used as such by any prospective purchaser. The services, systems and appliances shown have not been tested and no guarantee as to their operability or efficiency can be given.
Made with Metropix ©2021



14 Lower Chantry Lane, Canterbury, Kent CT1 1UF
Tel: 01227 499000
Email: exclusive@milesandbarr.co.uk

In Compliance with the Consumer Protection from Unfair Trading Regulations 2008 we have prepared these sales particulars as a general guide to give a broad description of the property. They are not intended to constitute part of an offer or contract. We have not carried out a structural survey and the services, appliances and specific fittings have not been tested. All photographs, measurements, floorplans and distances referred to are given as a guide and should not be relied upon for the purchase of carpets or any other fixtures or fittings. Lease details, service charges and ground rent (where applicable) are given as a guide only and should be checked and confirmed by your Solicitor prior to exchange of contracts. For Referral Fee Disclosure please visit: www.milesandbarr.co.uk/referral-fee-disclosure